

**Role Title: Parenting Worker**  
**Salary: Band 6/7**  
**Location: Children Services**  
**Report to: Parenting Coordinator**

## About Us

Bradford has created a new Children and Families Trust, which has been commissioned by Bradford Council to deliver a wide range of services for children, families and young people on their behalf. The Trust is accountable for determining how outcomes of these services are achieved and for the day-to-day running of commissioned children's services.

This is an important opportunity to renew our approach to delivering the support that Bradford's children, young people and families in need, by renewing services and creating a new organisation. We are bringing the mindset, dynamism and energy of a start-up together with the national expertise and determination of the Trust's Board, senior leadership and our colleagues' practical experiences of providing children's services in Bradford.

As a new organisation, Bradford Children and Families Trust has established our own purpose, vision, and outcomes for what we aim to achieve.

**Our vision:** For all children and young people in Bradford to be safe and able to realise their full potential.

**Our purpose:** To provide high-quality services with partners that help safeguard, support and promote the welfare of children, young people and families across the Bradford District.

We will achieve this through continuous improvements in our services and positive collaboration with our staff, our partner organisations.

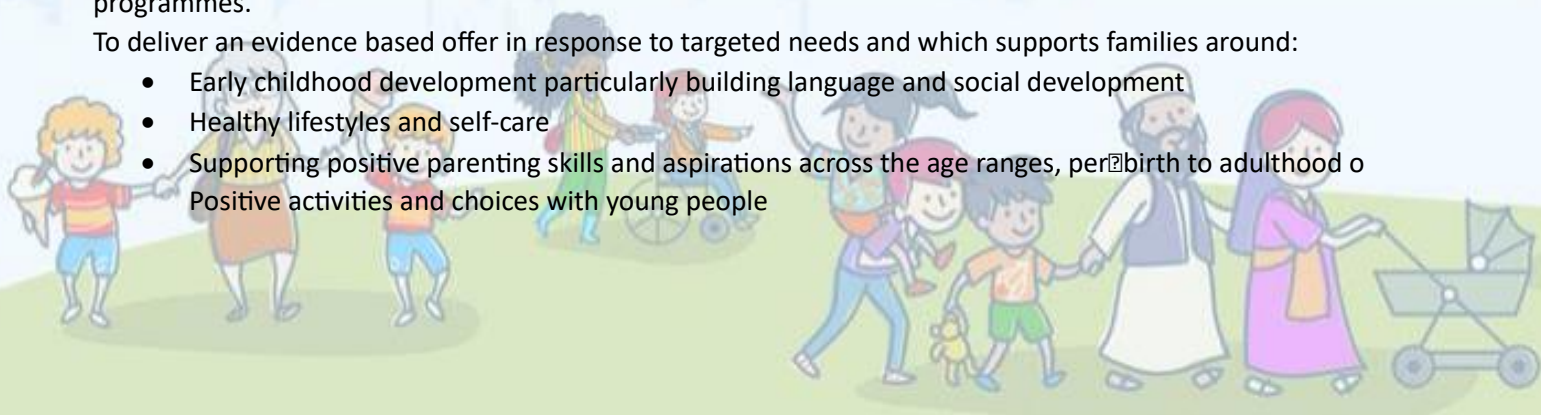
## Job Overview

Contribute to the co-production and co-delivery of evidence based prevention and early help programmes in designated areas, working in partnership with parents, children, young people and wider partners to improve outcomes.

To ensure that programmes address the educational needs of children and young people and thereby secure their take up of early education/childcare and regular attendance at school or on other alternative learning programmes.

To deliver an evidence based offer in response to targeted needs and which supports families around:

- Early childhood development particularly building language and social development
- Healthy lifestyles and self-care
- Supporting positive parenting skills and aspirations across the age ranges, per birth to adulthood o Positive activities and choices with young people



## Main Duties and Responsibilities

- Able to train in, deliver and pass evidenced-based programmes and activities within community locations.
- To pro-actively work with key partners, schools, childcare and community settings to make best use of wider local resources to reach targeted groups and secure co-delivery and take-up of key programmes.
- Actively support the development of children and young communication skills as foundational skills for life.
- Understand, model and embed high aspirations for children and young achievements in all areas of work.
- Seeking out and utilising a range of funding sources and delivery models to extend the reach of targeted programmes.
- To deliver and record group work programmes and activity in a manner which builds in feedback and evaluation so we know and show the impact on babies, children and young people.
- Identify and respond appropriately to any identified child protection and/ or safeguarding concerns relating to children and their families in line with service policy.
- To support volunteers and parent to contribute to service planning and co-delivery as part of their own progression and development.
- To undertake all duties commensurate to the nature and level of the post at initial place of work or at any other venue.
- To engage with professional supervision, team and practice development in line with the Bradford Behaviours.
- Participate in training, study and research projects aimed at professional and service development and pass accredited programmes.
- To comply with all policies and procedures, guidelines & codes of practice as laid down by the Council, Services and contributing to review as required.



## About You

We are looking for applicants who can demonstrate that they meet the following requirements:

### Education

- NVQ 3 or Diploma 3, in Health & Social Care, including knowledge regarding development, or equivalent child related qualification GCSE English and Maths or equivalent. Equivalent must include work based assessed competencies working with children and families.

### Experience

- The applicant is required to provide evidence of having previously spoken fluently to members of the public to meet the Advanced threshold level outlined under Special Knowledge above.
- Recent experience of working with vulnerable children and young people and their families including the delivery of evidenced-based programmes with groups.
- Evidence of training in and responding to safeguarding issues.

### Special Conditions

- The post holder is required to have a useable car available at all times or as advised by the line manager. The post is designated Casual Class 1 Car User status for the better performance of the duties for which the HMRC rate is payable.
- Disbursement of cash on occasions, access to confidential information, case records and files. Responsible for resources and equipment used including keys to buildings, opening and closing buildings as and when required, computer and mobile phone.
- No direct supervisory responsibilities but may offer guidance and support to colleagues, students, trainees and apprentices.



## ***Safeguarding Responsibilities***

*Bradford Children and Families Trust is committed to safeguarding and promoting the welfare of all children who use our services and as such expects all staff to share this commitment.*

*Successful applicants will be required to complete the relevant safeguarding checks. An DBS check might be requested.*

*We are an equal opportunities employer.*

